

BAND WRAP PREPARATION GUIDE

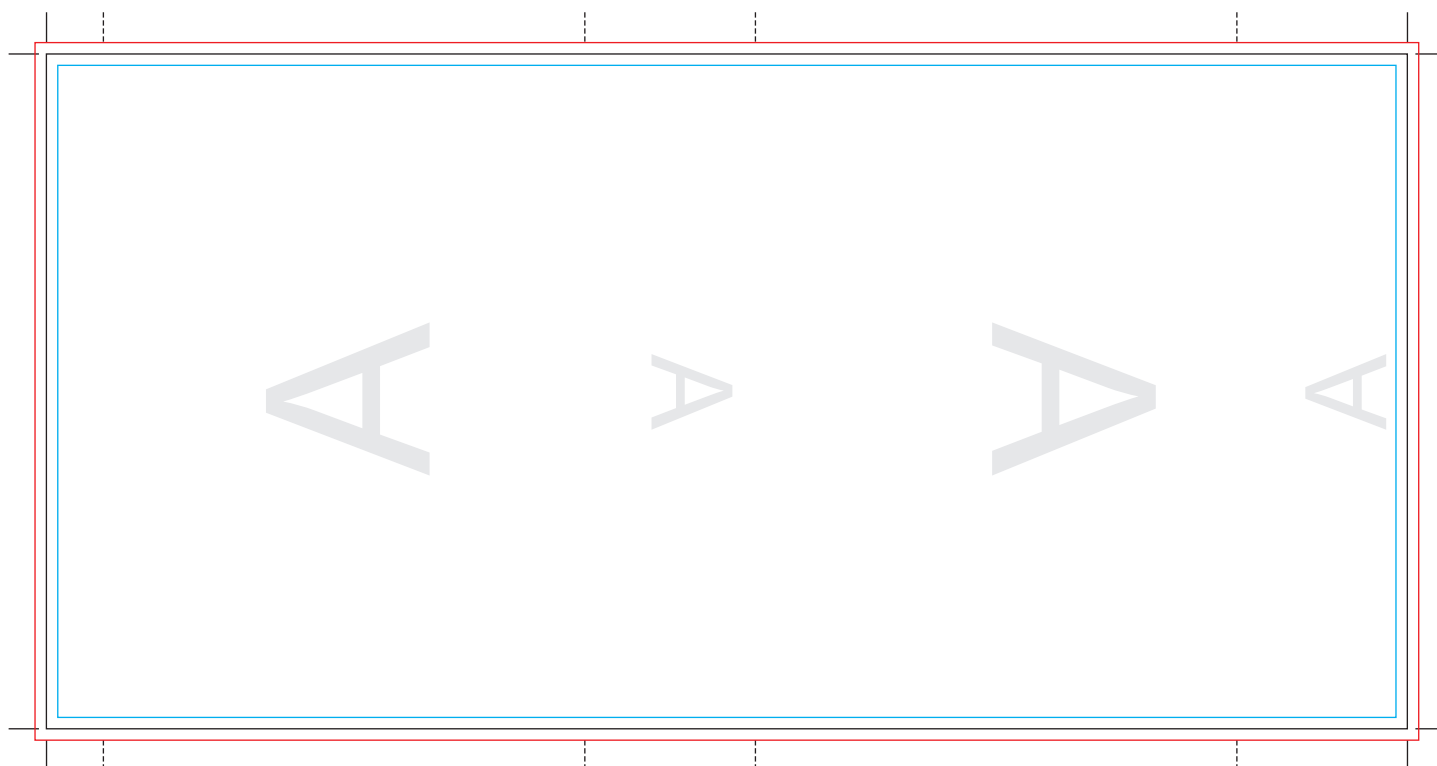
How should images be submitted?





- CMYK format
- 300 dpi.
- The final design must include a 3mm bleed on each side.

The bleed is an important extra area of the image that will be trimmed off to avoid white edges after cutting; it should not contain any essential information.

Accepted formats:

- Recommended format: PDF (press quality, with crop marks but without the template)
- Photoshop (PSD or TIFF) with layers separated and fonts used included in a separate folder
- PNG o JPG



SANGRE	
CORTE	
MARGEN	
PLIEGUE	

- **Bleed**: This is how far the design should extend to ensure no white borders appear around the print.
- **Cut line**: This is the guide line where the guillotine will usually cut.
- **Margin**: Do not place text or essential design content beyond this line.
- **Fold line**: Indicates where the band will be folded.